



LOT 69, 14 HOPETOUN AVENUE, RESERVOIR

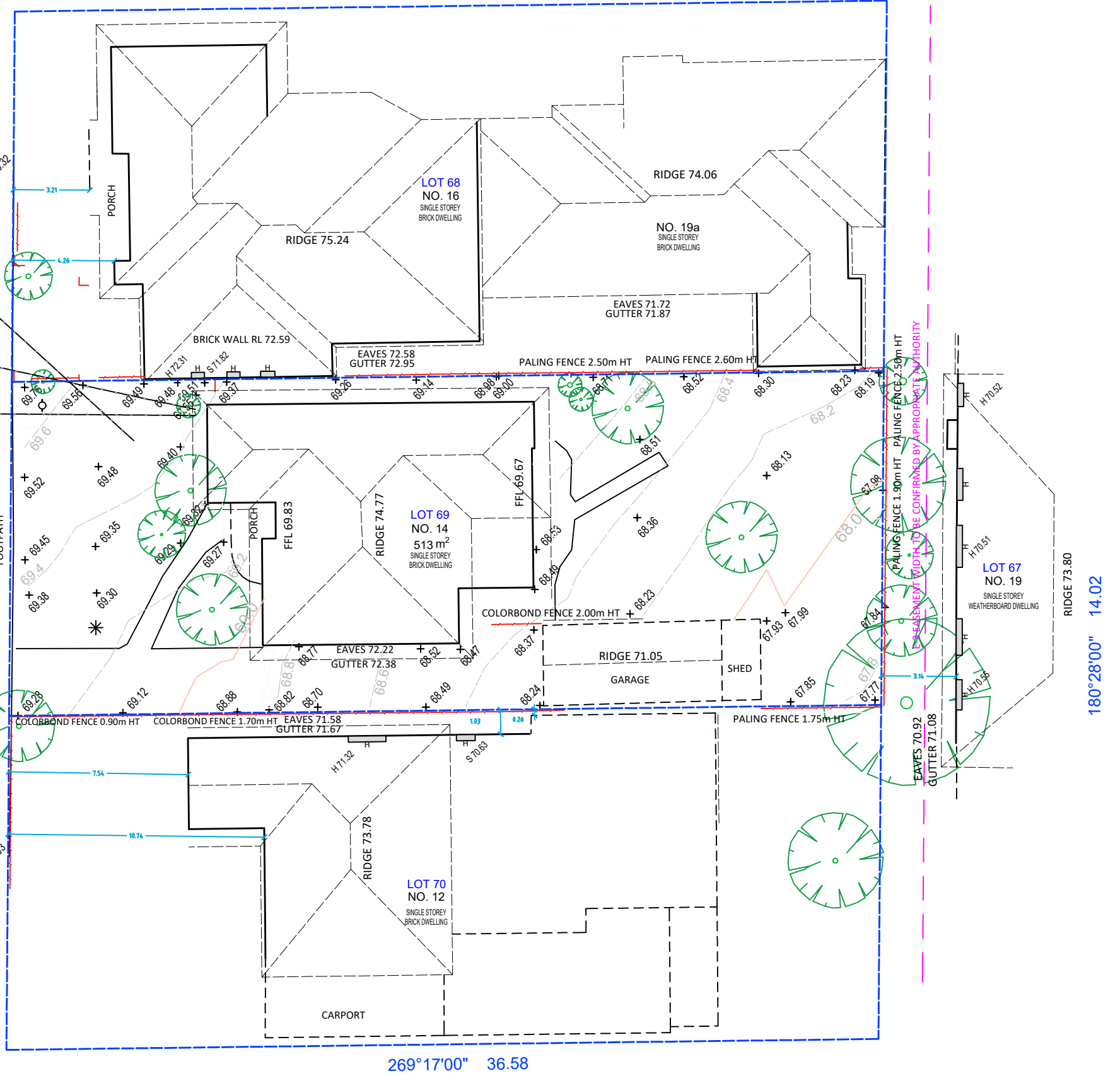
IS RE-ESTABLISHMENT REQUIRED:	YES	COMMENT:
ARE ALL TITLE PEGS ON BLOCK:	NO	COMMENT:
IF NOT, WHICH ONE IS MISSING:		COMMENT: ALL
IS SUBDIVISION COMPLETE:	YES	COMMENT:
IS THERE ANY REASON LEVEL MAY CHANGE:	YES	COMMENT:



89°17'00" 36.58

HOPETOUN AVENUE

0°28'00" 14.02



269°17'00" 36.58

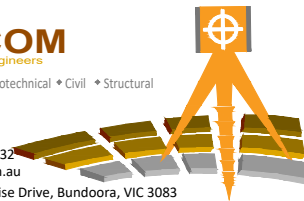
**PLAN OF FEATURE AND LEVEL SURVEY**

LOT 69, 14 HOPETOUN AVENUE, RESERVOIR	513m <sup>2</sup>
LP 8744	SCALE AT 1:200 PAPER SIZE: A3
REFERENCE NUMBER: 2241375	VERSION A
FIELD WORK BY: MARK A.	DATE : 12/05/2024



Land Surveying • Geotechnical • Civil • Structural

Office: 03 9468 5232  
Website: rcce.com.au  
Suite 4/ 20 Enterprise Drive, Bundoora, VIC 3083



**DISCLAIMER:**  
BOUNDARIES SHOWN BY THICK BLUE LINES ARE APPROXIMATE ONLY. THIS IS NOT A TITLE RE-ESTABLISHMENT SURVEY.

Location of title and relevant offsets are approximated from occupation. Levels are an Australian height datum contour interval 0.20m.

This document is confidential and remains the property of Rescom Consulting Engineers. It must not be copied by any member or used for any other project without written approval by Rescom Consulting Engineers.

HOUSE	STOP VALVE	PSM	TRUCK
RIDGE EDGE	FIRE HYDRANT	ELECTRICITY PIT	TREE
EAVES	TITLE PEG	SPOT LEVEL	SHRUB
RETAINING WALL	NAIL / RIVET	SIGN	WATER METER
FENCE	GFLOOR WINDOW	POLE AND LIGHT	PROPERTY INLET
SEWER PIT	INSPECTION SHAFT	INVERT OF KERB	TELECOM PIT
JUNCTION PIT	SIDE ENTRY PIT	BACK OF KERB	
		PATH	