


RE: Potential relocation of HB - Richmond noise monitor discussion [SEC=OFFICIAL]

 Community Engagement Airservices  
To: s47F

Hi s47F

Thanks for this advice. Just a few questions below in red.

s47F

**From:** s47F <[redacted]@AirservicesAustralia.com>  
**Sent:** Thursday, 4 February 2021 4:06 PM  
**To:** Community Engagement Airservices <communityengagement@AirservicesAustralia.com>; s47F <[redacted]@AirservicesAustralia.com>  
**Subject:** Potential relocation of HB - Richmond noise monitor discussion [SEC=OFFICIAL]

Hi s47F

I have looked into the possibility of moving the Richmond noise monitor and come up with the following discussion. My recommendation would be to leave the monitor in its current location.

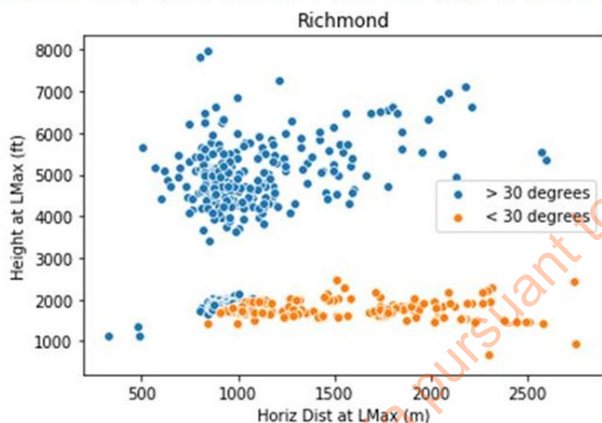
Review of Richmond noise monitor location

- There is an option to explore moving the Richmond short term noise monitor in Hobart.
- Currently the Richmond noise monitor is located north of Hobart Airport, approximately 870m offset from the runway centre line.
- The current location is roughly 870m offset from runway aligned arrivals and 2,000m from RNP arrivals to RWY12.
- Potential new locations have been sourced closer to the RNP.

Data Analysis

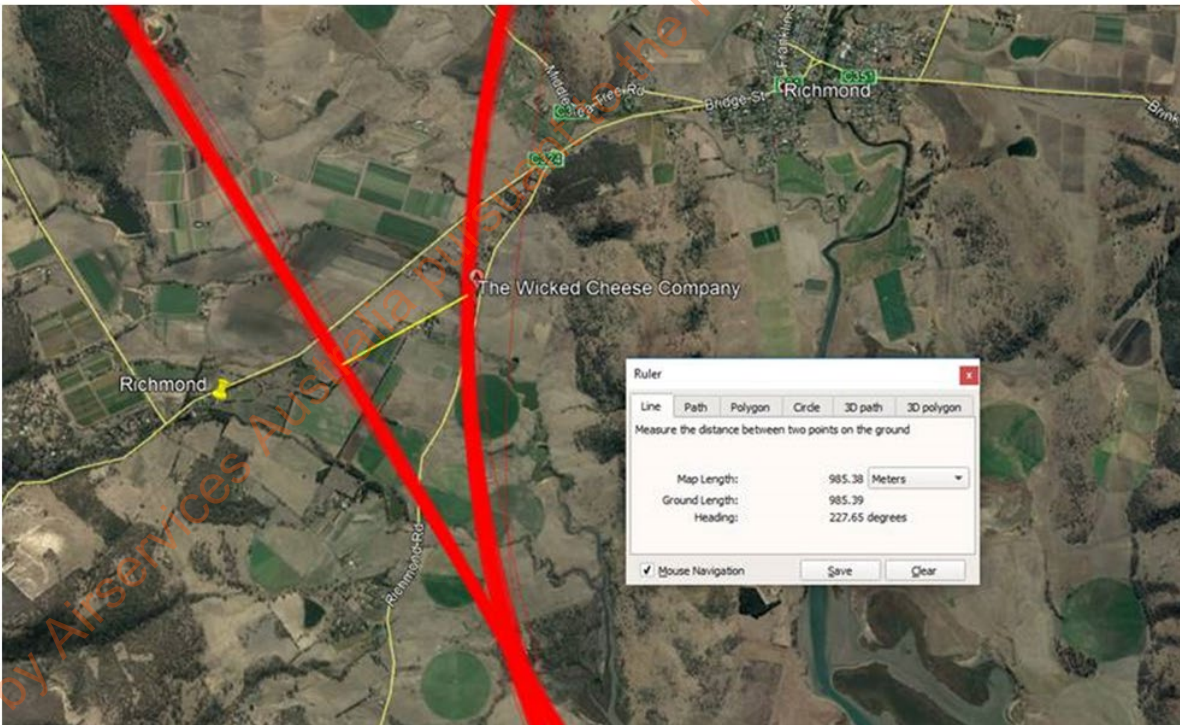
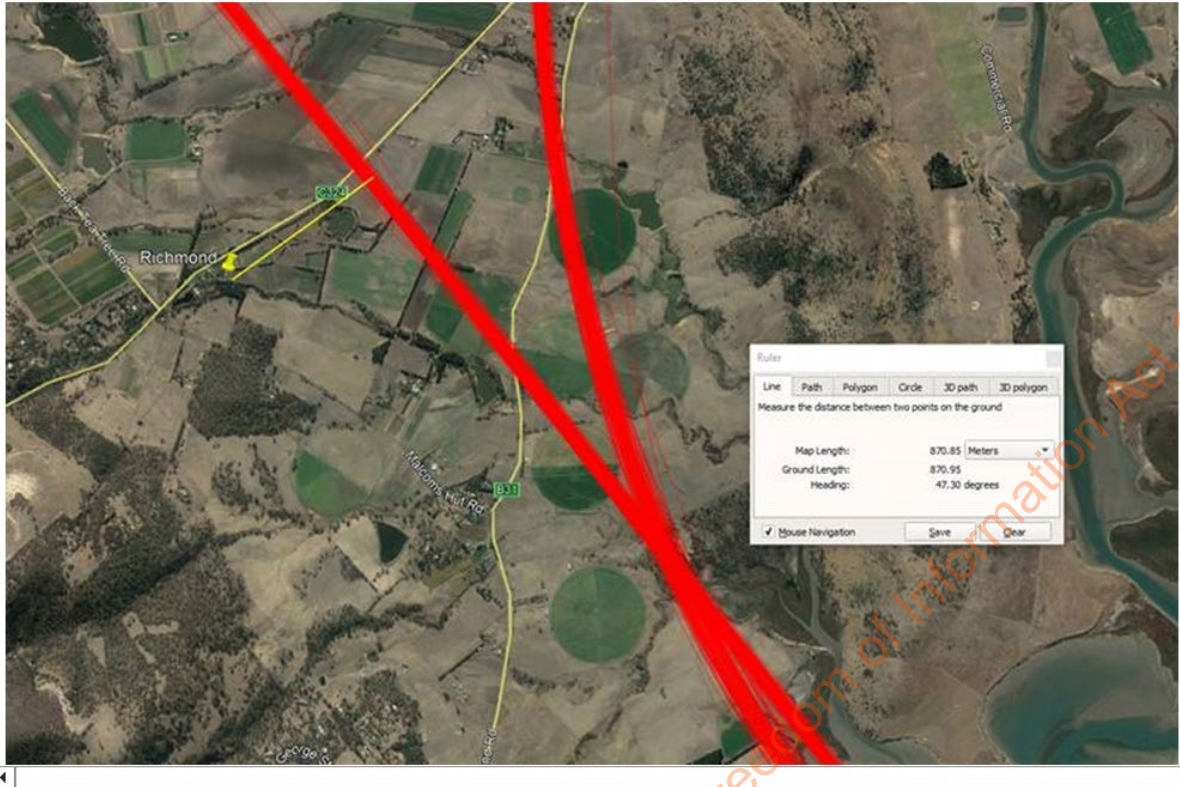
- Currently 35% of correlated noise events are below the ISO20906 recommended ground angle of greater than 30 degrees (Highlighted orange in the figure below).

Is this % for Runway aligned or RNP or both? What % of runway aligned are we catching? What % RNP?



Recommendation

- Two potential locations have been established 1) near the Little Wood Berry Farm and 2) near the Wicked Cheese Company. Both are closer to the RNP.
- These locations may obtain better results for the RNP, however may create additional ground angle issues for runway aligned arrivals. The offset to runway aligned arrivals may increase from its current 870m to near 1000m. (see the images below)
- In addition, land owners have indicated that some construction works may happen in the next few months at both potential locations.
- We are currently capturing adequate data relating to RNP arrivals via the Primrose Sands monitor to the south of the airport. Therefore moving the Richmond to capture further RNP information is not recommended.



Regards,

s47F

**Senior Environment and Noise Specialist**

s47F

Alan Woods Building  
25 Constitution Avenue, Canberra ACT 2600



Released by Airservices Australia pursuant to the Freedom of Information Act 1982 (Cth)